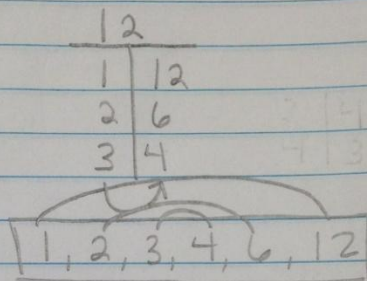
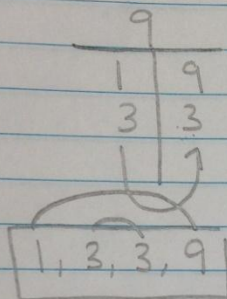


Greatest Common Factor (GCF)

the biggest factor that 2 or more numbers share



shared factors: 1 and 3
 *GCF of 9 and 12
 is 3.

? total equal group sizes

48 - 5th graders
 60 - 6th graders

1	48	4 60	60
2	24	4 60	2 30
3	16	4 60	3 20
4	12	4 60	4 15
6	8	4 60	5 12
		4 60	6 10

GCF = 12

12 is the size of each group for 5th and 6th graders.

1, 2, 3, 4, 6, 8, 12, 16, 24, 48

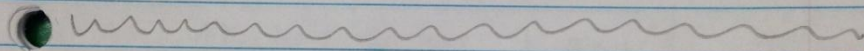
1, 2, 3, 4, 5, 6, 10, 15, 20, 30, 60

Least Common Multiples (LCM)

the smallest multiple that
2 ~~numbers~~ or more numbers share

x	1	2	3	4	5	6	7
9	9	18	27	36	45	54	63
12	12	24	36	48	60	72	84

36 is the least common multiple
of 9 and 12.



?

total days
to empty both
the milk and
cereal on the
same day

12 servings of cereal
16 servings of milk
one serving of each
per day

	Days/servings							
x	1	2	3	4	5	6	7	8
12	12	24	36	48				
16	16	32	48					

servings per
package

It would take
48 days for
both to finish
on the same
day.